



UNIVERSITY of DUBUQUE





Babka Theater

Technical Rider

Revised July 2017

HERITAGE CENTER STAFF

Thomas J. Robbins

Executive Director

Office – 563-589-3325

E-Mail: TRobbins@dbq.edu

Victoria Molle

Director of Audience Services

Office – 563-589-3432

E-Mail: VMolle@dbq.edu

Randy Schultz

Technical Director

Office - 563-589-3580

Cell - 262-224-2975

E-Mail: RSchultz@dbq.edu

Korissa Clark

Office Manager

Office – 563-589-3325

E-Mail: KClark@dbq.edu

LOCATION

University address: 2000 University Ave.
Dubuque, IA 52001

Heritage Center address: 2255 Bennett St.
Dubuque, IA 52001

BUILDING ACCESS / LOADING DOCK

Main entrance is located off of Bennett Street.

Loading dock / stage door are on the west side of the building off of McCormick Street.

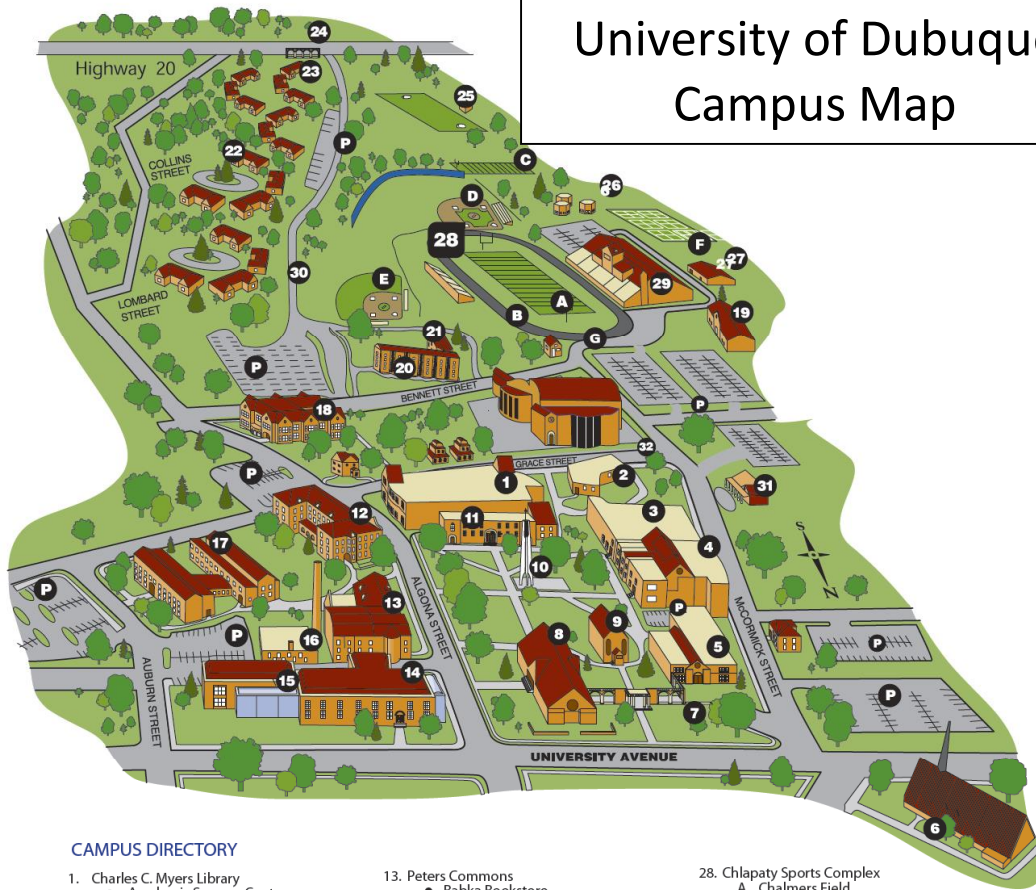
The loading dock leveler is adjustable from 3 feet to 5 feet.

No Shore Power available.

Vehicles are not allowed to remain in the loading dock area once unloaded, there is parking available in University lots or on street parking.



University of Dubuque Campus Map



CAMPUS DIRECTORY

1. Charles C. Myers Library
 - Academic Success Center
 - Learning Assistance Center
 - Sylvia's Common Ground Coffee Shop
 2. Smith Hall
 - Business/Finance
 - Education
 - Human Resources
 - Physical Education/HWR
 - Safety/Security
 3. Stoltz Sports Center
 - Athletic Administrative Offices
 - Jon Davison Court
 - Physical Education Offices
 4. McCormick Gymnasium
 5. Jackaline Baldwin Dunlap Technology Center
 - CGIM
 - CIS
 6. Westminster Presbyterian Church
 7. Steffens Colonnade
 8. Blades Hall
 9. Alumni Hall
 10. William C. Laube Memorial Bell Tower
 11. Van Vliet Hall
 - Academic Affairs Office
 - Advancement Offices
 - Alumni Relations
 - Campus Post Office
 - English
 - History
 - Political Science
 - Print Room/Mailroom
 - Speech Communication
 - UD for Kids
 12. Severance Hall
 - Aviation
 - Philosophy
 - Psychology
 - Religion
 - Seminary Admission
 - Seminary Dean's Office
 - Seminary Faculty and Staff Offices
 - Sociology/Criminal Justice
 13. Peters Commons
 - Babka Bookstore
 - Campus Ministry
 - Career and Life Services
 - Dining Hall
 - Food Service Offices
 - International Studies
 - Student Housing
 - Student Life Office
 - Student Offices
 - Student Union/Underground
 14. Science Center – Goldthorp Hall
 - Mathematics
 - Nursing
 - Sciences
 15. Science Center – Mary Chlapaty Hall
 - Mathematics
 - Sciences
 16. Heating Plant
 17. Aitchison Residence Hall
 18. Charles & Romona Myers Center
 - Business Faculty Offices
 - Cashier
 - College Admission
 - M.A.C. Graduate Offices
 - M.B.A. Graduate Offices
 - President's Office
 - Romona's Boutique
 - Registrar
 - Student Accounts
 - Student Financial Planning
 - Wendt Center
 - University Relations
 19. Mercer Birmingham Building (ROTC and Athletic Coaches' Offices)
 20. Cassat Residence Hall
 21. Donnell Residence Hall
 22. Seminary Village
 23. University Park Village
 24. Conlon Colonnade
 25. Oyen Soccer Field and Press Box
 26. Potterveld Apartments
 27. Maintenance/Custodial Offices
 28. Chlapaty Sports Complex
 - A. Chalmers Field
 - B. Miller Track
 - C. Football Practice Field
 - D. Baseball Field
 - E. Softball Field
 - F. Tennis Courts
 - G. Ticket Booth
 29. Chlapaty Recreation & Wellness Center
 30. University Parkway
 31. University Daycare
 32. Heritage Center
 - Aitchison/Welch Rehearsal Room
 - Babka Theatre
 - Campus Post Office
 - Charles and Elizabeth Bisignano Gallery
 - DB&T Fine and Performing Arts Suite
 - Farber Box Office
 - John and Alice Butler Hall
 - Linda Chlapaty Music Education Center
 - Sparty's Convenience Store
 - Strautmeyer Rehearsal Room
 - Susan Magill Smith Suite
 - Student Activities
 - International Students
 - Multicultural Services
- P. Parking Areas
 Visitor parking is available in the lot next to McCormick Street, by the football field, and across from Severance Hall. Before parking in these areas, visitors must obtain a parking permit from the Security Office.

SEATING

Main level

Main floor can be configured in multiple layouts to accommodate different events.
Multiple level seating can be accomplished using the Staging Concepts seating decking.
200 – Padded folding chairs available for audience seating.

Gallery / Balcony Level

Gallery / Balcony level can accommodate up to 50 seats.

STAGING

There is no permanent stage.
If a stage is required one can be set up in various configurations.

STAGE / ROOM FLOOR

The stage floor is rubber sleeper sprung covered with Masonite topped plywood painted satin black.
Penetrations are not allowed in any locations.

STAGE DIMENSIONS

Dimension	Distance Imperial
South Wall to North Wall	58'-3"
East Wall to West Wall	50'-0"
South Curtain to North Curtain (Under Gallery)	50'-11"
East Curtain to West Curtain (Under Gallery)	43'-8"
South Gallery to North Gallery	44'-4"
East Gallery to West Gallery	38'-0"
Floor to Catwalk	23'-4"
Floor to Electric Trim	24'-9"
Floor to Gallery	12'-3"

SOFT GOODS

Drape	Quantity	Material	Color	Finished Size Wide x Tall	Fullness	Top Finish	Bottom Finish
Legs	26	Plateau IFR Velour	Black	6'-0" x 10'-0"	50%	Webbing, track rollers, 12" on center	Pocket & chain
Cyclorama	1	Muslin / Seamless	White	37'-6" x 22'-6"	Flat	Webbing, grommets & ties; 12" on center	Pipe Pocket

HOUSE ACOUSTIC TREATMENTS

Curtains located under Gallery can be used to help adjust the acoustics in the room.

LINESET SCHEDULE

Lineset	Suspension	House Rep Purpose	Show Purpose	Distance from South Wall	Batten Length	Notes
1	Fixed Pipe	Electric		6'-2"	40' - 2"	
2A	Fixed Pipe	Electric		11'-0"	40' - 2"	
2B	Fixed Pipe	Electric		16'-1"	40' - 2"	
3A	Fixed Pipe	Electric		20'-6"	40' - 2"	
3B	Fixed Pipe	Electric		25'-7"	40' - 2"	
4A	Fixed Pipe	Electric		30'-0"	40' - 2"	
4B	Fixed Pipe	Electric		35'-1"	40' - 2"	
5A	Fixed Pipe	Electric		39'-6"	40' - 2"	
5B	Fixed Pipe	Electric		44'-7"	40' - 2"	
6	Fixed Pipe	Electric		49'-0"	40' - 2"	

ELECTRICAL

Company Switches

Location	Description	Rating	Output
Storage Room North Wall	LEX - Power Gate	400 Amp, 3 Phase, 208Y/120 VAC	16 series Cam-type receptacle and lug
Storage Room North Wall	LEX - Power Gate	200 Amp, 3 Phase, 208Y/120 VAC	16 series Cam-type receptacle and lug

Electrical Distribution

All circuits are 120VAC, 20A or 208Y/120VAC 20A

Dimmable 120v = Stage Pin connectors

Switched 120v = Edison, NEMA 5-15 straight

Switched 208v= L6-20 Connectors

LIGHTING

Dimming and control

The lighting control system is an ETC Gio*** or ETC Ion w/2 x 20 fader wing***

3 - ETC Sensor 3 dimmer racks.

ETC Paradigm Architectural/House Lighting System

House Lighting

Full house light control can be accessed by the console or remote panels. Limited house lighting control can be accessed by button panels located by the entrances. These can be locked out during performances.

Work Lighting

Work lighting can be accessed through the stage managers rack, console or remote panels.

Instruments***

- 133 ETC Source 4 ERS Bodies
- 15 – 50° Lens Tube
- 29 – 36° Lens Tube
- 38 – 26° Lens Tube
- 19 – 19° Lens Tube
- 14 – 14° Lens Tube
- 20 – 10° Lens Tube
- 90 – ETC Source 4 PAR (4 lenses available)
- 6 – Altman 3 Cell Cyc Lights

Miscellaneous Accessories***

- 36 - “B” size Gobo holders (Source Four)
- 27 – “A” size Gobo holders (Source Four)
- 4 – “B” size Glass Gobo holders (Source Four)
- 6 – Female Edison to Male Stage Pin
- 6 – Male Edison to Female Stage Pin
- 22 – Two-Fers – Stage Pin
- Multiple lengths of Cable – Stage Pin
- 8 – 13’ Booms (Side Arms available)
- 11 – Top Hats for Source Four Ellipsoidals
- 8 – Top Hats for Source Four Pars
- 5 – Iris Units for Source Four Ellipsoidals

*** Items shared between Butler Hall and Babka

Theater Electrical Distribution/Lighting Positions

Location	Dimmer Circuits		Switched 120v		Switched 208v	
	Quantity	Circuits	Quantity	Circuits	Quantity	Circuits
Catwalk 1	11 3	37 – 45 30 – 31			3	521* - 522 519
Catwalk 2A	24	46 – 69			1	525*
Catwalk 2B	24	70 - 93			1	524*
Catwalk 3A	24	94 – 117			1	524*
Catwalk 3B	24	118 – 141			1	526*
Catwalk 4A	24	142 – 165			1	527*
Catwalk 4B	24	166 – 189			1	528*
Catwalk 5A	24	190 – 213			1	
Catwalk 5B	24	214 – 237			1	530*
Catwalk 6	24 2 2	238 – 246 25 – 26 35 - 36			3	531* - 532 517
West Catwalk	3	32 - 34			2	520
West Catwalk – Socapex**	6	253-258			1	533*
East Catwalk	3	27 - 29			2	518
East Catwalk – Socapex**	6	247-252			1	533*
Main Floor - North	6	19 - 24			1	516*
Main Floor – East	6	7 – 12			1	514*
Main Floor – South	6	1 – 6			1	513*
Main Floor - West	6	13 - 18			1	515*

*Doubled

** Socapex Breakouts are not available (future equipment)

AUDIO

Front of House

Location of Equipment	Manufacturer	Model	Description	Inventory	Notes
FOH					
	Behringer	x32	Mixer	1	

Front of House PA, Power, & Speaker Processing

Location of Equipment	Manufacturer	Model	Description	Inventory	Notes
Speakers					
	EAW	AX396		4	Location can be flexible in room
Amplifiers					
	QSC	CMX2000V	2 Outputs Each	2	Mains

Monitor System – 4 Total Mixes Available

Type of Equipment	Manufacturer	Model	Notes	Inventory
Amplifiers				
Portable***	QSC	RMX2450	2 Amps with 2 Channels Each	4 Mixes
Stage Monitors***				
	EAW	VRM12	12" Monitor	4
	Yamaha	CM15V	15" Monitor	6
	Yamaha	CM12V	12" Monitor	2

Microphone/DI/Misc.

Type of Equipment	Manufacturer	Model	Notes	Inventory
Mics / Direct Boxes***				
	Shure	ULXD4-H50	534-538 MHz Wireless Receiver	9
	Shure	ULXD1	Body Pack Transmitter	9
	Shure	ULXD2/58	Hand Held Transmitter	9
	Shure	ULXP4-G3	470-506 MHz Wireless Receiver	9
	Shure	ULX	Body Pack Transmitter	3
	Shure	ULX2/58	Hand Held Transmitter	3
	Shure	WL184	Lavaliere Mic	2
	Countryman	E6	Headset Mic	10
	Shure	WCB6	Micro-Lavalier Mic	6
	Shure	SM58		7
	Shure	Beta 58A		1
	Shure	SM57		4
	Shure	Beta 57A		2
	Shure	SM81		2
	Shure	Beta 52A	Kick Drum Mic	1
	Sennheiser	E604	Drum Mics	4
	Audio Technica	Pro 37	Cardioid Condenser	3
	Audix	M1255B	Condenser – Choir Mic	4
	Countryman	Isomax 2-H	Hanging Mic	3
	Rode	NT4	Stereo Condenser – Rec Mic	1
	Rode	NT1	Large-diaphragm Condenser	2
	Crown	PCC 160	Floor Mic	4
	Whirlwind	PCDI	Stereo DI - Passive	2
	Whirlwind	Director	DI Box – Passive	5
	Whirlwind	Director-II	Dual DI box - Passive	1
	Behringer	Ultra DI	DI Box - Active	1

*** Items shared between Butler Hall and Babka Theater

Audio Input/Output Locations

Location	Mic Lines	Tie Lines	Speaker Lines	Ethernet	Video	Intercom
Catwalk 1	41 - 42	41 - 42	17 - 18	17 - 18	15 - 16	A B C D
Catwalk 2A	39 - 40	39 - 40	15 - 16	19 - 22	13 - 14	A B C D
Catwalk 3A	43 - 44	43 - 44	19 - 20	19 - 22	17 - 26	A B C D
Catwalk 4A	37 - 38	37 - 38	13 - 14	13 - 14	11 - 12	A B C D
Catwalk 5A	35 - 36	35 - 36	11 - 12	11 - 12	9 - 10	A B C D
Catwalk 6	33 - 34	33 - 34	9 - 10	9 - 10	7 - 8	A B C D
Main Floor - North	1 - 16	17 - 24	1 - 4	1 - 4	1 - 2	A B C D
Main Floor - East	25 - 32	29 - 32	7 - 8	7 - 8	5 - 6	A B C D
Main Floor - South		9 - 16		27 - 30	32 - 36 37 - 40	A B C D A B C D
Main Floor - West	17 - 24	25 - 28	5 - 6	5 - 6	3 - 4	A B C D
Entrance Hall - South		45 - 46			45 - 46	A B C D
Control Room		1 - 8		23 - 26	27 - 31 41 - 44	A B C D A B C D

Intercom/ Paging System

Components***

Type of Equipment	Manufacturer	Model	Notes	Inventory
Main Station	Clear-Com	MS704	1 main station is portable	2
Remote Station	Clear-Com	RM704		2
Wired Belt Pack	Clear-Com	RS601		8
Double Muff Headset	Clear-Com	CC-60		2
Single Muff Headset	Clear-Com	CC-95		6
Gooseneck Mic	Clear-Com	GN18	For paging system	2
Handset	Clear-Com	HS-6		2

Paging System***

Integrated into the intercom system is the paging system. There is a monitor to each location, and each location has an independent volume control. The page mic is located stage right on the stage managers rack or in the control booth. The page mic will override the independent volume control in each room, but not the master switch.

Paging / Program Locations***

AV Storage	Follow Spot Booth
Large Dressing Room	Stage Equipment Storage
Small Dressing Room	Loading Dock
Makeup Room	Control Booth
Costume Shop	Corridor
Scene Shop	Costume Shop
Green Room	Black Box Control Room
Dimmer Room	Black Box Dimmer Room
instrument Storage	Black Box Amp Room

Assisted Listening System

House management maintains control of ALD receivers and distributes them upon request.

Type of Equipment	Manufacturer	Model	Notes	Main Hall Inventory
Assisted Listening				
	Listen	LT-800-072	Transmitter	1
	Listen	LT-300-072	Receiver***	35
	Listen	LA-164	Ear Piece***	35
	Listen	LA-166	Neck Loop***	9

*** Items shared between Butler Hall and Babka Theater

Pianos

- 1 - Steinway & Sons Concert Grand - Model D - 9'-0"
- 1 - Yamaha C3 Grand - 6'-1"
- 1 - Yamaha GC1 Grand - 5'-3"
- 1 - Yamaha U1-Silent Upright

Chairs / Music Stands***

- 100 - Wenger musician's chairs
- 70 - Manhasset music stands
- 10 - Music Stand lights

Staging***

- 8 - 4'x8' Staging Concepts Stage Decks (Black Finish)
- 60 - 3'-6' Staging Concepts Stage Decks (Black Finish)
- 15 - "Pie" pieces (different sizes)
- 44 - 8" Legs
- 72 - 14" Legs
- 44 - 16" Legs
- 44 - 24" Legs
- 72 - 28" Legs
- (4 legs needed for each deck)

Other***

- 6 - 30" Wood Backless Stools (Black)
- 1 - Clearsonic 5 Section Drum Shield 24" x 66"
- 1 - Blizzard Atmosfear Tour HZ Hazer
- 1 - 20" Mirror ball with 3 RPM motor

BACKSTAGE

Dressing Rooms***

2 dressing rooms with counters, mirrors, toilets, sinks and showers

1 Makeup room located between the dressing rooms equipped with counters, mirrors, outlets, sinks, and mirror lights

Laundry***

1 – Jiffy Steamer J-4000

1 – Iron

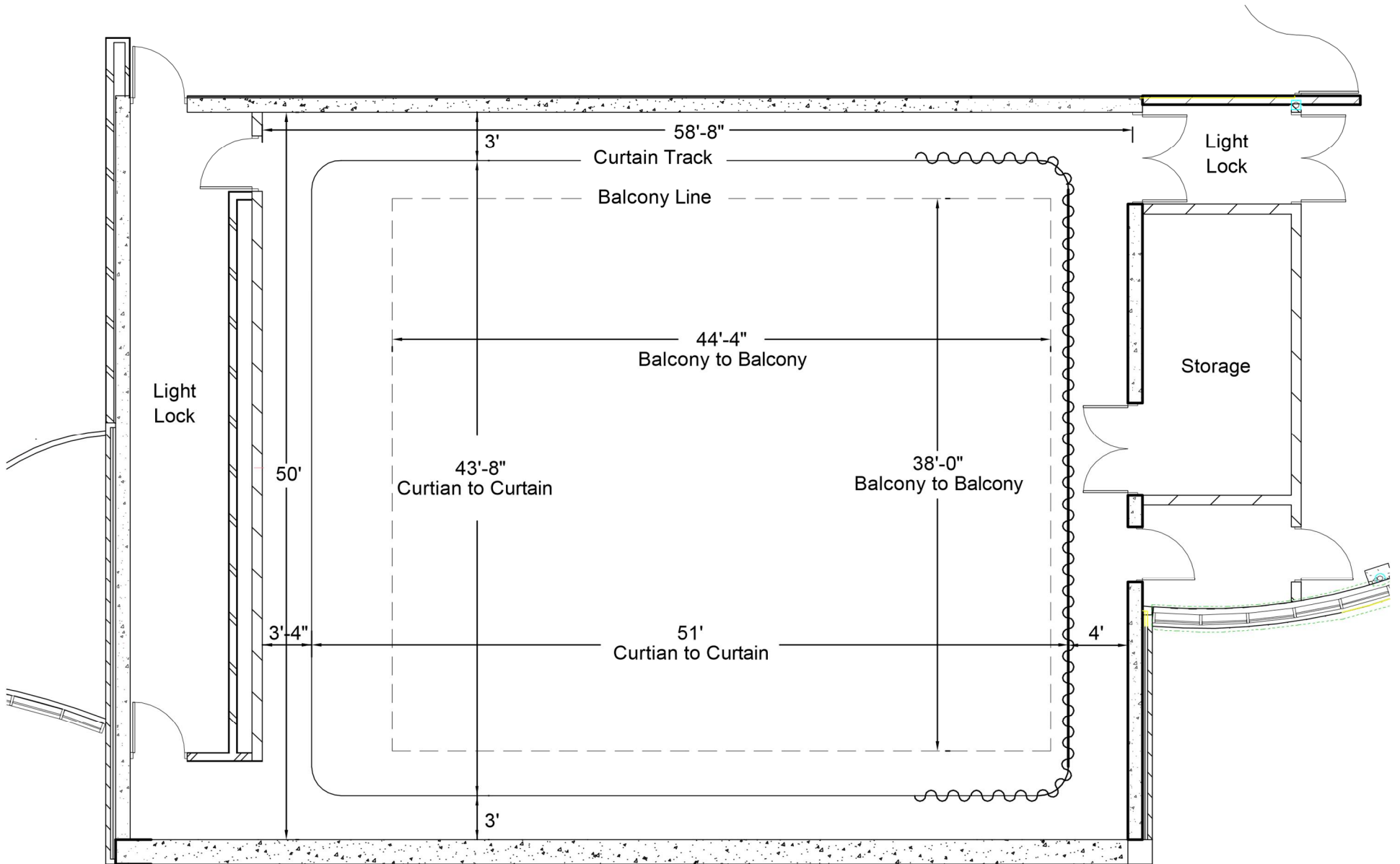
1 – Ironing Board

Washer and Dryer needs can be accommodated on campus with advance notice

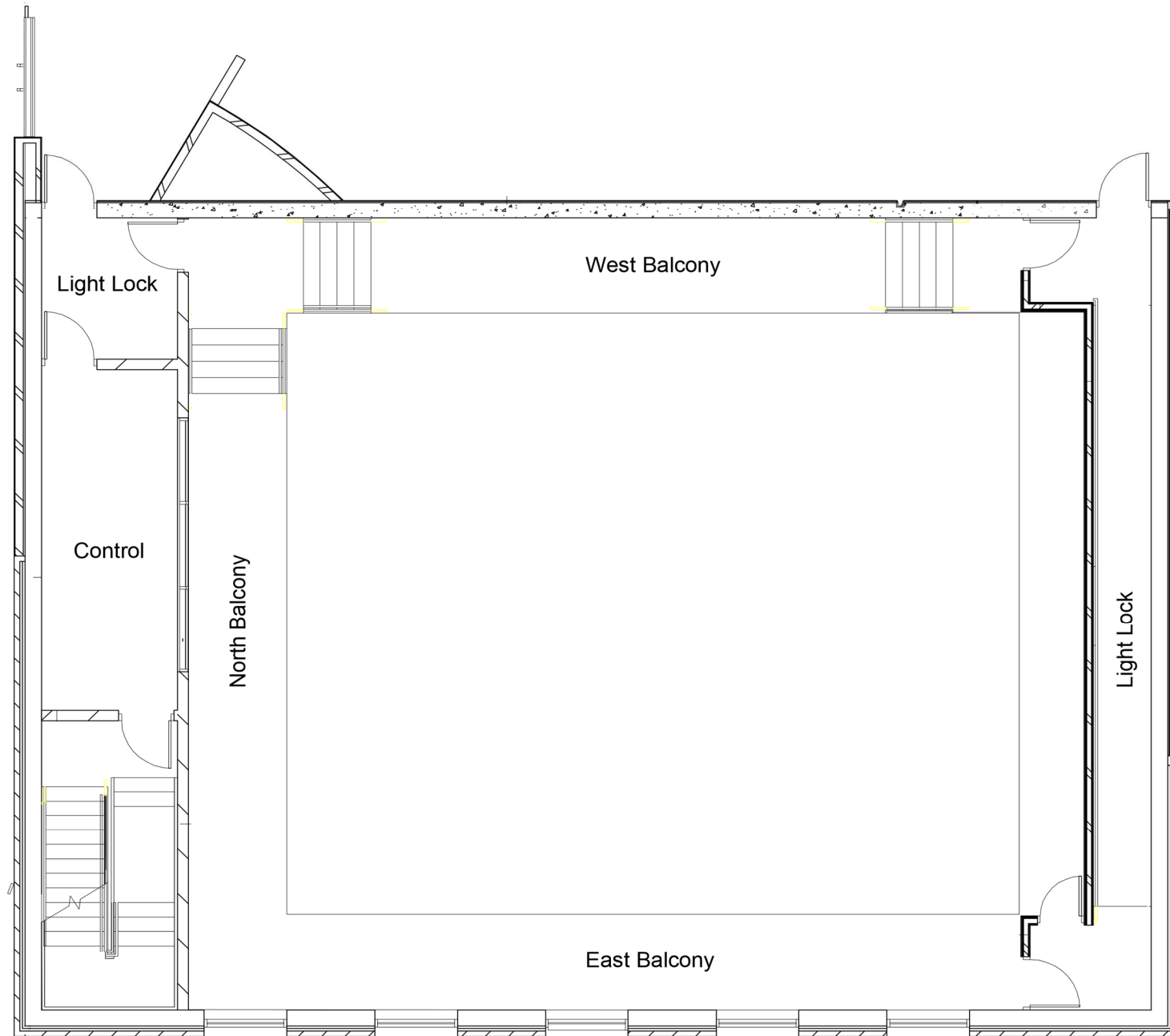
Green Room***

The Green Room is an open lounge located between the Babka Theatre and Butler Hall backstage.

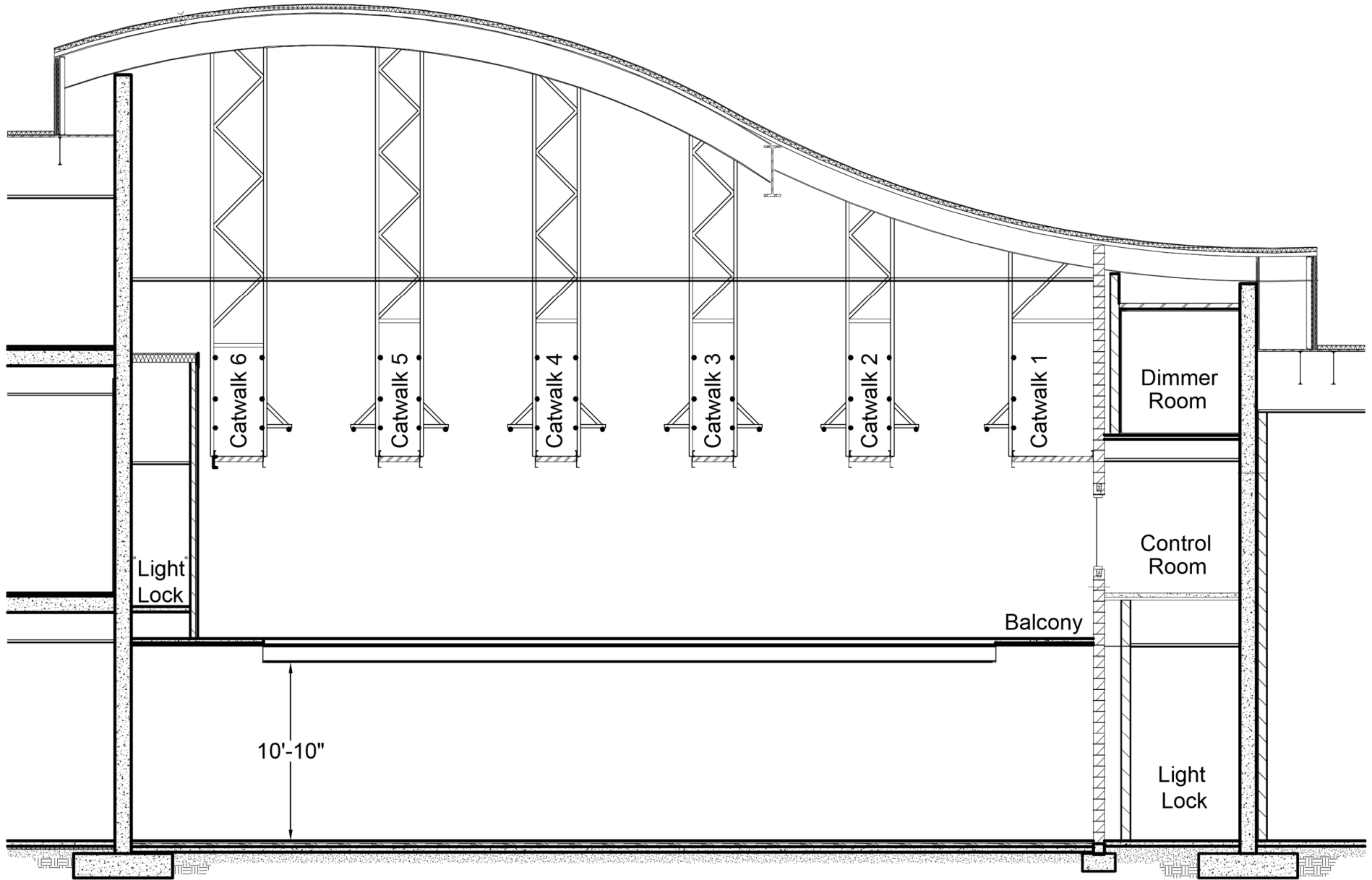
MAIN FLOOR

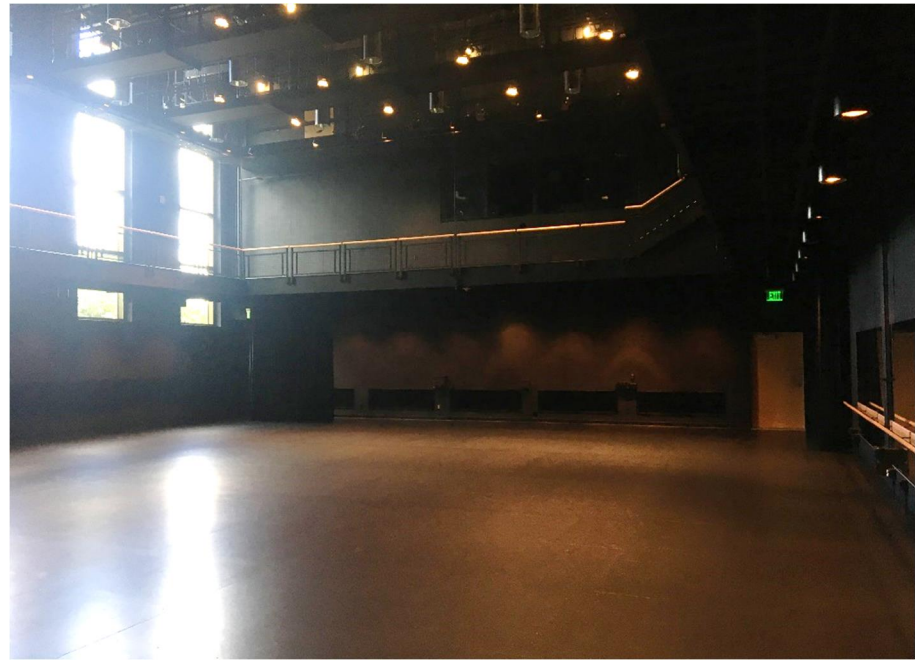
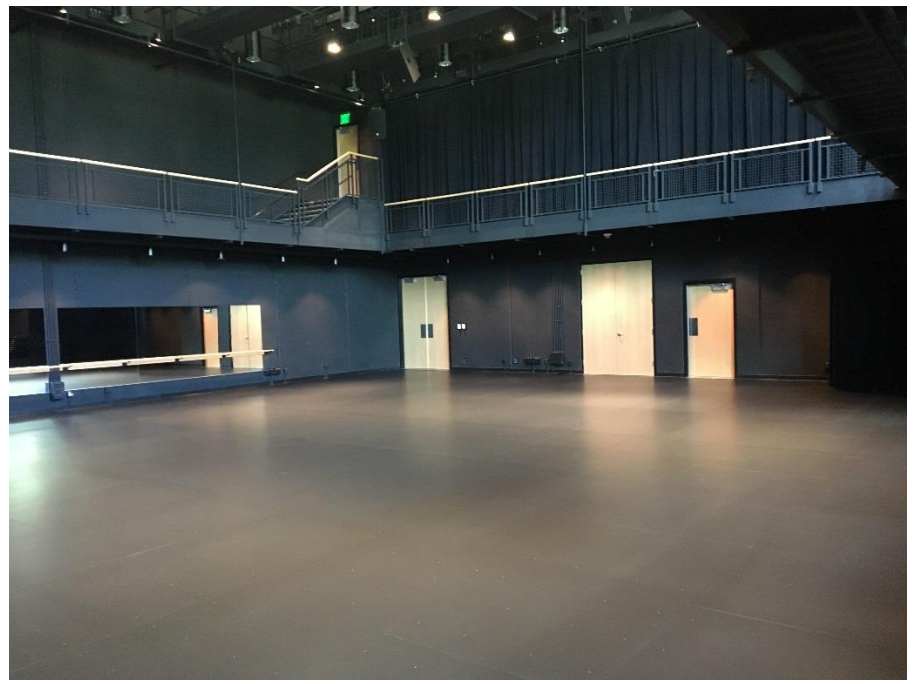


BALCONY LEVEL



CROSS SECTION





Hotels (in alphabetical order, no recommendation implied)

Best Western Plus Dubuque Hotel & Conference Center 3100 Dodge St, Dubuque, IA	(563) 557-8000
Country Inn & Suites By Carlson Dubuque, IA 1315 Associates Dr, Dubuque, IA	(563) 583-2500
Days Inn Dubuque 1111 Dodge St, Dubuque, IA	(563) 583-3297
Grand Harbor Resort & Waterpark 350 Bell St, Dubuque, IA	(563) 690-4000
Hampton Inn Dubuque 3434 Dodge St, Dubuque, IA	(563) 690-2005
Hilton Garden Inn Dubuque Downtown 1801 Greyhound Park Rd, Dubuque, IA	(563) 585-5200
Holiday Inn Dubuque 450 Main Street Dubuque, IA 52001	(563) 556-2000
Hotel Julien Dubuque 200 Main St, Dubuque, IA	(563) 556-4200
Redstone Inn & Suites 504 Bluff St, Dubuque, IA	(563) 582-1894
Super 8 Dubuque/Galena Area 2730 Dodge St, Dubuque, IA	(563) 582-8898

Medical (in alphabetical order, no recommendation implied)

Finley Hospital - .4 Miles 350 N Grandview Ave, Dubuque, IA	(563) 582-1881
Mercy Hospital - 1.3 Miles 250 Mercy Dr, Dubuque, IA	(563) 589-8000

Taxi (in alphabetical order, no recommendation implied)

#1 Green Cab	(563) 495-4444
A1 Taxi & Delivery Premier Services	(563) 582-1818
A Classy Taxi	(563) 495-7222
C M Cab Co	(563) 556-1303
E & R Taxi	(563) 564-9938
E-Z Taxi Service of Dubuque	(563) 582-3999
Starlight Mini Bus & Limousine	(563) 552-2028
Starlight Cab Co	(563) 556-6666

Laundry/Drycleaners

Courtesy Cleaners 535 Hill St, Dubuque, IA	(563) 583-5332
Courtesy Cleaners 3398 Kennedy Cir, Dubuque, IA	(563) 583-3999
Premier Linen & Uniform 461 W 9th St, Dubuque, IA	(563) 583-9153