

Student Tech Connect Guide

Instructions for network and WiFi access

PHONES



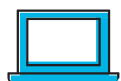
Android:

1. Select the "UD_WiFi" network.
2. Set the "EAP Method" to "PEAP."
3. Set the "Phase 2 Authentication" to "MSCHAPV2."
4. Set the "CA Certificate" to "Do Not Validate" or "Do Not Check."
5. Login using your UD username in "Identity" and UD password.

iPhone/iPad:

1. Select the "UD_WiFi" network.
2. Login using your UD username and password.
3. Select Trust to accept the certificate.

LAPTOPS



When you connect your computer to UD's network for the first time, you must download and install a program called ClearPass which will check your computer for an antivirus program and other system requirements. Follow these steps:

1. Connect your laptop to the "UD_WiFi" network using your UD username and password.
2. Open a web browser (Chrome/Firefox for PC and Safari for Mac). A webpage called "Posture Check" should automatically open.
3. Click on the correct download link for your operating system (with Windows or Mac). Save the file.
4. Run the ClearPass OnGuard Install from the saved location.
5. Click "Next," then click "Finish." Be sure to leave the "Run ClearPass OnGuard" box checked.
6. ClearPass OnGuard will open a login window. Log in using your UD username and password.
7. ClearPass OnGuard will then check your computer to ensure it is safe to join the network. It will show up as either a green or red icon in your taskbar.
 - A. If the icon is green, your computer is healthy and no updates are needed.
 - B. If it is red, double-click the icon to see what is needed. Run Windows updates or install an antivirus program as recommended.

OTHER DEVICES

(Smart TVs or gaming consoles)



To use your other internet-connected devices (such as smart TVs, streaming sticks, or gaming consoles) on the campus network, follow these steps:

1. Go to <https://guest.dbq.edu/guest>.
2. Login with your UD username and password.
3. Click on "Create Device."
4. Enter the type of device in the "Device Name" field (such as Playstation or Xbox or Roku).
5. Enter the Media Access Control (MAC) address in the appropriate field. Your device's MAC address can typically be found under Network Settings or search online for instructions specific to your device.
6. Your device should now be connected to the UD_Guest_Wifi network.

