



UNIVERSITY of DUBUQUE





# **Babka Theater**

## **Technical Information**

---

Revised December 2023

## HERITAGE CENTER STAFF

<b>Victoria Molle</b>	<b>Co-Director of Heritage Center / Audience Services</b> Office – 563-589-3432 E-Mail: <a href="mailto:VMolle@dbq.edu">VMolle@dbq.edu</a>
<b>Randy Schultz</b>	<b>Co-Director of Heritage Center / Production</b> Office - 563-589-3580 Cell - 262-224-2975 E-Mail: <a href="mailto:RSchultz@dbq.edu">RSchultz@dbq.edu</a>
<b>Connor Manning</b>	<b>Technical Director</b> Office - 563-589-3324 Cell – 563-564-2214 E-Mail: <a href="mailto:CManning@dbq.edu">CManning@dbq.edu</a>
<b>Noah Bullock</b>	<b>Coordinator of Bisignano Art Gallery / Social Media / Promotions</b> Office – 563-589-3648 E-Mail: <a href="mailto:nbullock@dbq.edu">nbullock@dbq.edu</a>

## LOCATION

University address: 2000 University Ave.  
Dubuque, IA 52001

Heritage Center address: 2255 Bennett St.  
Dubuque, IA 52001

## BUILDING ACCESS / LOADING DOCK

Building Main Entrance is located off of Bennett Street.

Loading dock / stage door are on the West side of the building off of McCormick Street.

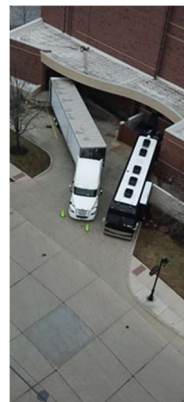
For GPS directions to loading dock use address of house across the street – 877 McCormick Street

The loading dock leveler is adjustable from 3 feet to 5 feet.

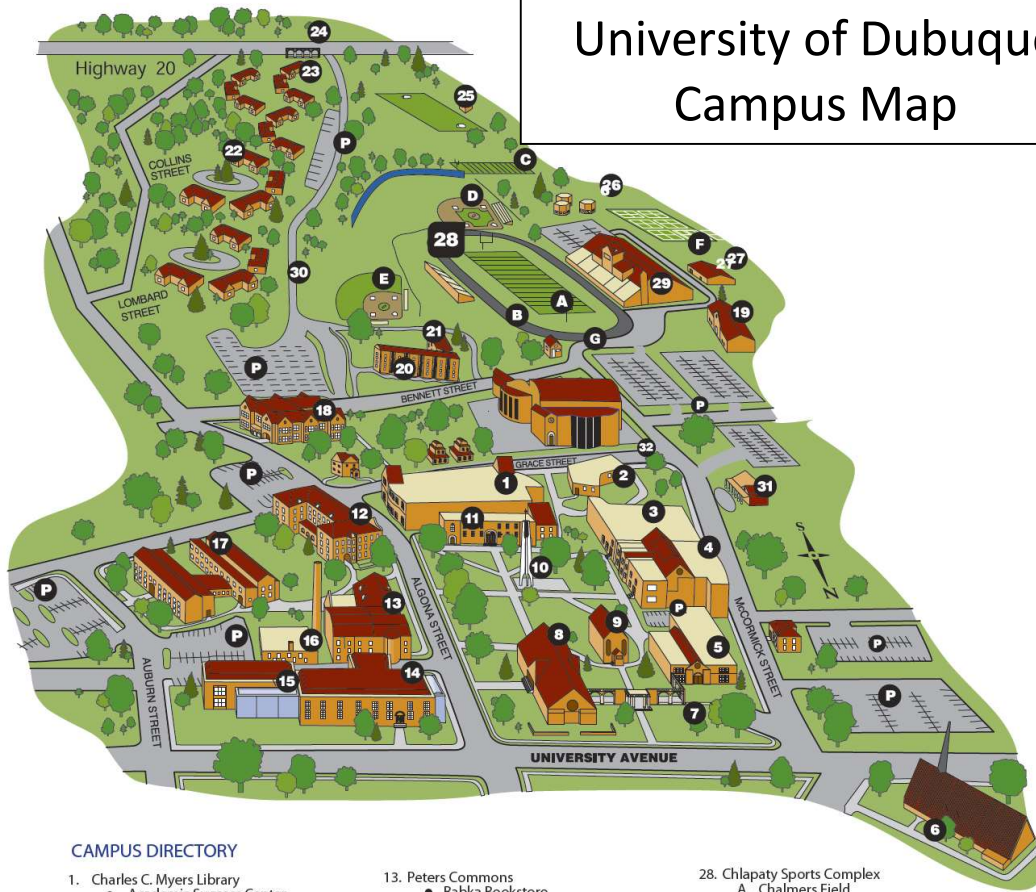
10' x 10' Garage Door

Shore Power – 50 Amp

Typically, vehicles are not allowed to remain in the loading dock area once unloaded, there is parking available in University lots or on street parking.



# University of Dubuque Campus Map



## CAMPUS DIRECTORY

1. Charles C. Myers Library
    - Academic Success Center
    - Learning Assistance Center
    - Sylvia's Common Ground Coffee Shop
  2. Smith Hall
    - Business/Finance
    - Education
    - Human Resources
    - Physical Education/HWR
    - Safety/Security
  3. Stoltz Sports Center
    - Athletic Administrative Offices
    - Jon Davison Court
    - Physical Education Offices
  4. McCormick Gymnasium
  5. Jackaline Baldwin Dunlap Technology Center
    - CGIM
    - CIS
  6. Westminster Presbyterian Church
  7. Steffens Colonnade
  8. Blades Hall
  9. Alumni Hall
  10. William C. Laube Memorial Bell Tower
  11. Van Vliet Hall
    - Academic Affairs Office
    - Advancement Offices
    - Alumni Relations
    - Campus Post Office
    - English
    - History
    - Political Science
    - Print Room/Mailroom
    - Speech Communication
    - UD for Kids
  12. Severance Hall
    - Aviation
    - Philosophy
    - Psychology
    - Religion
    - Seminary Admission
    - Seminary Dean's Office
    - Seminary Faculty and Staff Offices
    - Sociology/Criminal Justice
  13. Peters Commons
    - Babka Bookstore
    - Campus Ministry
    - Career and Life Services
    - Dining Hall
    - Food Service Offices
    - International Studies
    - Student Housing
    - Student Life Office
    - Student Offices
    - Student Union/Underground
  14. Science Center – Goldthorp Hall
    - Mathematics
    - Nursing
    - Sciences
  15. Science Center – Mary Chlapaty Hall
    - Mathematics
    - Sciences
  16. Heating Plant
  17. Aitchison Residence Hall
  18. Charles & Romona Myers Center
    - Business Faculty Offices
    - Cashier
    - College Admission
    - M.A.C. Graduate Offices
    - M.B.A. Graduate Offices
    - President's Office
    - Romona's Boutique
    - Registrar
    - Student Accounts
    - Student Financial Planning
    - Wendt Center
    - University Relations
  19. Mercer Birmingham Building (ROTC and Athletic Coaches' Offices)
  20. Cassat Residence Hall
  21. Donnell Residence Hall
  22. Seminary Village
  23. University Park Village
  24. Conlon Colonnade
  25. Oyen Soccer Field and Press Box
  26. Potterveld Apartments
  27. Maintenance/Custodial Offices
  28. Chlapaty Sports Complex
    - A. Chalmers Field
    - B. Miller Track
    - C. Football Practice Field
    - D. Baseball Field
    - E. Softball Field
    - F. Tennis Courts
    - G. Ticket Booth
  29. Chlapaty Recreation & Wellness Center
  30. University Parkway
  31. University Daycare
  32. Heritage Center
    - Aitchison/Welch Rehearsal Room
    - Babka Theatre
    - Campus Post Office
    - Charles and Elizabeth Bisignano Gallery
    - DB&T Fine and Performing Arts Suite
    - Farber Box Office
    - John and Alice Butler Hall
    - Linda Chlapaty Music Education Center
    - Sparty's Convenience Store
    - Straatmeyer Rehearsal Room
    - Susan Magill Smith Suite
      - Student Activities
      - International Students
      - Multicultural Services
- P. Parking Areas  
 Visitor parking is available in the lot next to McCormick Street, by the football field, and across from Severance Hall. Before parking in these areas, visitors must obtain a parking permit from the Security Office.

## SEATING

### **Main level**

Main floor can be configured in multiple layouts to accommodate different events.  
Multiple level seating can be accomplished using the Staging Concepts seating decking.  
200 – Padded folding chairs available for audience seating.

### **Gallery / Balcony Level**

Gallery / Balcony level can accommodate up to 50 seats.

## STAGING

There is no permanent stage.  
If a stage is required one can be set up in various configurations.

## STAGE / ROOM FLOOR

The room floor is rubber sleeper sprung covered with Masonite topped plywood painted satin black.  
Penetrations are not allowed in any locations.

## STAGE DIMENSIONS

Dimension	Distance Imperial
South Wall to North Wall	58'-3"
East Wall to West Wall	50'-0"
South Curtain to North Curtain (Under Gallery)	50'-11"
East Curtain to West Curtain (Under Gallery)	43'-8"
South Gallery to North Gallery	44'-4"
East Gallery to West Gallery	38'-0"
Floor to Catwalk	23'-4"
Floor to Electric Trim	24'-9"
Floor to Gallery	12'-3"

## SOFT GOODS

Drape	Quantity	Material	Color	Finished Size Wide x Tall	Fullness	Top Finish	Bottom Finish
Legs	26	Plateau IFR Velour	Black	6'-0" x 10'-0"	50%	Webbing, track rollers, 12" on center	Pocket & chain
Cyclorama	1	Muslin / Seamless	White	37'-6" x 22'- 6"	Flat	Webbing, grommets & ties; 12" on center	Pipe Pocket

## HOUSE ACOUSTIC TREATMENTS

Curtains located under Gallery can be used to help adjust the acoustics in the room.

## LINESET SCHEDULE

Lineset	Suspension	House Rep Purpose	Show Purpose	Distance from South Wall	Batten Length	Notes
1	Fixed Pipe	Electric		6'-2"	40' – 2"	
2A	Fixed Pipe	Electric		11'-0"	40' – 2"	
2B	Fixed Pipe	Electric		16'-1"	40' – 2"	
3A	Fixed Pipe	Electric		20'-6"	40' – 2"	
3B	Fixed Pipe	Electric		25'-7"	40' – 2"	
4A	Fixed Pipe	Electric		30'-0"	40' – 2"	
4B	Fixed Pipe	Electric		35'-1"	40' – 2"	
5A	Fixed Pipe	Electric		39'-6"	40' – 2"	
5B	Fixed Pipe	Electric		44'-7"	40' – 2"	
6	Fixed Pipe	Electric		49'-0"	40' – 2"	

## ELECTRICAL

### Company Switches

Location	Description	Rating	Output
Storage Room	LEX - Power Gate	400 Amp, 3 Phase, 208Y/120 VAC	16 series Cam-type receptacle and lug
Storage Room	LEX - Power Gate	200 Amp, 3 Phase, 208Y/120 VAC	16 series Cam-type receptacle and lug
1	Lex Power Pagoda	100 Amp	(15) 5-20 Duplex Receptacles
3	Lex 5-Wire #2	100 Amp – 50' with Camlock Ends	

### Electrical Distribution

All circuits are 120VAC, 20A or 208Y/120VAC 20A

Dimmable 120v = Stage Pin connectors

Switched 120v = Edison, NEMA 5-15 straight

Switched 208v= L6-20 Connectors

## LIGHTING

### Dimming and control

The lighting control system is an ETC Gio\*\*\* or ETC Ion w/2 x 20 fader wing\*\*\*

3 - ETC Sensor 3 dimmer racks.

6 – Net3 ACN Gateway

ETC Paradigm Architectural/House Lighting System

IPads for Remote Focus Unit

### House Lighting

Full house light control can be accessed by the console or remote panels. Limited house lighting control can be accessed by button panels located by the entrances. These can be locked out during performances. ETC Par 575W instruments.

## Work Lighting

Work lighting can be accessed through the stage managers rack, console or remote panels.

### Instruments\*\*\*

132 ETC Source 4 ERS Bodies, 750w  
 20 – 50° Lens Tube  
 41 – 36° Lens Tube  
 40 – 26° Lens Tube  
 20 – 19° Lens Tube  
 14 – 14° Lens Tube  
 20 – 10° Lens Tube  
 99 – ETC Source 4 PAR, 750w (4 lenses available)  
 6 – Altman 3 Cell Cyc Lights  
 15 – Chauvet Rogue R2X Wash – RGBW LED

### Follow Spot

2 – Lycian 1275, 1200w

### Miscellaneous Accessories\*\*\*

36 - "B" size Gobo holders (Source Four)  
 27 - "A" size Gobo holders (Source Four)  
 4 - "B" size Glass Gobo holders (Source Four)  
 16 – Female Edison to Male Stage Pin  
 6 – Male Edison to Female Stage Pin  
 22 – Two-Fers – Stage Pin  
 Multiple lengths of Cable – Stage Pin  
 8 – 13' Booms (Side Arms available)  
 11 – Top Hats 6.25"  
 8 – Top Hats 7.5"  
 8 – Iris Units for Source Four Ellipsoidals  
 6 – Color Extenders 7.5"  
 3 – Barn Doors for ETC PAR

\*\*\* Items shared between Butler Hall and Babka Theater

## Theater Electrical Distribution/Lighting Positions

Location	Dimmer Circuits		Switched 120v		Switched 208v	
	Quantity	Circuits	Quantity	Circuits	Quantity	Circuits
Catwalk 1	11 3	37 – 45 30 – 31			3	521* - 522 519
Catwalk 2A	24	46 – 69			1	525*
Catwalk 2B	24	70 - 93			1	524*
Catwalk 3A	24	94 – 117			1	524*
Catwalk 3B	24	118 – 141			1	526*
Catwalk 4A	24	142 – 165			1	527*
Catwalk 4B	24	166 – 189			1	528*
Catwalk 5A	24	190 – 213			1	
Catwalk 5B	24	214 – 237			1	530*
Catwalk 6	24 2 2	238 – 246 25 – 26 35 - 36			3	531* - 532 517
West Catwalk	3	32 - 34			2	520
West Catwalk – Socapex**	6	253-258			1	533*
East Catwalk	3	27 - 29			2	518
East Catwalk – Socapex**	6	247-252			1	533*
Main Floor - North	6	19 - 24			1	516*
Main Floor – East	6	7 – 12			1	514*
Main Floor – South	6	1 – 6			1	513*
Main Floor - West	6	13 - 18			1	515*

\*Doubled

\*\* Socapex Breakouts are not available (future equipment)

## Electrical Distribution – ETC Connector Strips

All circuits are 120VAC, 20A or 208Y/120VAC 20A

Dimmable 120v = Stage Pin connectors

Switched 208v= L6-20P Twistlock Connectors

## AUDIO

### Front of House

Location of Equipment	Manufacturer	Model	Description	Inventory	Notes
FOH					
	Behringer	x32	Mixer	1	

### Front of House PA, Power, & Speaker Processing

Location of Equipment	Manufacturer	Model	Description	Inventory	Notes
Speakers					
	EAW	AX396		4	Location can be flexible in room
Amplifiers					
	QSC	CMX2000V	2 Outputs Each	2	Mains

### Monitor System – 4 Total Mixes Available

Type of Equipment	Manufacturer	Model	Notes	Inventory
Amplifiers				
Portable***	QSC	RMX2450	2 Amps with 2 Channels Each	4 Mixes
Stage Monitors***				
	EAW	VRM12	12" Monitor	4
	Yamaha	CM15V	15" Monitor	10
	Yamaha	CM12V	12" Monitor	2



## Microphone/DI/Misc.

Qty	Manufacturer	Model	Notes
9	Shure	ULXD4-H50 534-538 MHz	Wireless Receiver
9	Shure	ULXD1	Body Pack Transmitter
9	Shure	ULXD2/58	Hand Held Transmitter
3	Shure	ULXP4-G3 470-506 MHz	Wireless Receiver
3	Shure	ULX	Body Pack Transmitter
3	Shure	ULX2/58	Hand Held Transmitter
2	Shure	WL184	Lavaliere Mic
10	Countryman	E6	Headset Mic
6	Shure	WCB6	Micro-Lavalier Mic
1	Shure	WB98H/C	Instrument Clip on, TA4F
1	Shure	WBH54T	Headworn Mic, TA4F
4	Shure	WA302	Instrument Cable, TA4F
7	Shure	SM58	
1	Shure	Beta 58A	
4	Shure	SM57	
1	Shure	87C (Capsule Only)	
2	Shure	Beta 57A	
6	Shure	SM81	Cardioid Condenser
1	Shure	Beta 52A	Kick Drum Mic
2	Shure	Beta 91A	Condenser Mic
7	Sennheiser	E604	Drum Mics
1	Shure	PGA 98H	Instrument Mic
3	Audio Technica	Pro 37	Cardioid Condenser
4	Audix	M1255B	Condenser – Choir Mic
7	Audio Technica	Pro 45	Condenser – Choir Mic
3	Countryman	Isomax 2-H	Hypercardioid Hanging Mic
1	Rode	NT4	
2	Rode	NT1	
4	Crown	PCC 160	Floor Mic
2	Whirlwind	PCDI	Stereo DI - Passive
6	Whirlwind	Director	DI Box – Passive
1	Whirlwind	Director 2	Dual DI box - Passive
4	Radial	PROD2	Stereo DI -Passive
1	Behringer	Ultra DI	DI Box - Active
2	ProCo	AV1A	AV DI Box - Passive

\*\*\* Items shared between Butler Hall and Babka Theater

## Snakes / Cables

Manufacturer	Model	Notes	Inventory
<b>Snakes***</b>			
Whirlwind	Split Snake	48 Channels w/10 Returns	1
Whirlwind	Mini 12 – 50'	12 Sends – XLR (Box) to Fan XLRM	1
Whirlwind	Mini 6 – 50'	6 Sends – XLR (Box) to Fan XLRM	2
Whirlwind	16 Channel Box -100'	16 Sends – XLR (Box) to Fan XLRM	1
ProCo	Stagemaster – 100'	16 Sends – XLR (Box) to Fan XLRM 4 Returns – XLRM (Box) to Fan ¼"	2
Multiple	5'-0" XLR - XLRM	Mic Cable	5
Multiple	10'-0" XLR - XLRM	Mic Cable	12
Multiple	15'-0" XLR - XLRM	Mic Cable	17
Multiple	25'-0" XLR - XLRM	Mic Cable	19
Multiple	50'-0" XLR - XLRM	Mic Cable	29
Multiple	100'-0" XLR - XLRM	Mic Cable	2
Multiple	10'- 0" Speakon - Speakon	Monitor Cable	4
Multiple	15' 0" Speakon - Speakon	Monitor Cable	8
Multiple	25'- 0" Speakon - Speakon	Monitor Cable	8
Multiple	50'- 0" Speakon - Speakon	Monitor Cable	10

\*\*\*Items shared between Butler Hall and Babka Theater

## Audio Input/Output Locations

Location	Mic Lines	Tie Lines	Speaker Lines	Ethernet	Video	Intercom
Catwalk 1	41 - 42	41 - 42	17 - 18	17 - 18	15 - 16	A B C D
Catwalk 2A	39 - 40	39 - 40	15 - 16	19 - 22	13 - 14	A B C D
Catwalk 3A	43 - 44	43 - 44	19 - 20	19 - 22	17 - 26	A B C D
Catwalk 4A	37 - 38	37 - 38	13 - 14	13 - 14	11 - 12	A B C D
Catwalk 5A	35 - 36	35 - 36	11 - 12	11 - 12	9 - 10	A B C D
Catwalk 6	33 - 34	33 - 34	9 - 10	9 - 10	7 - 8	A B C D
Main Floor - North	1 - 16	17 - 24	1 - 4	1 - 4	1 - 2	A B C D
Main Floor - East	25 - 32	29 - 32	7 - 8	7 - 8	5 - 6	A B C D
Main Floor - South		9 - 16		27 - 30	32 - 36 37 - 40	A B C D A B C D
Main Floor - West	17 - 24	25 - 28	5 - 6	5 - 6	3 - 4	A B C D
Entrance Hall - South		45 - 46			45 - 46	A B C D
Control Room		1 - 8		23 - 26	27 - 31 41 - 44	A B C D A B C D

## Intercom/ Paging System

### Components\*\*\*

Type of Equipment	Manufacturer	Model	Notes	Inventory
Main Station	Clear-Com	MS704	1 main station is portable	2
Remote Station	Clear-Com	RM704		2
Wired Belt Pack	Clear-Com	RS601		8
Double Muff Headset	Clear-Com	CC-60		2
Single Muff Headset	Clear-Com	CC-95		6
Gooseneck Mic	Clear-Com	GN18	For paging system	2
Handset	Clear-Com	HS-6		4
Wireless Base Station	Clear-com	HME DX210		1
Wireless Beltback	Clear-Com	BP210		4
Headset	Clear-Com	CC-15-MD4		4

Wired system works with wireless system.

### Paging System\*\*\*

Integrated into the intercom system is the paging system. There is a monitor to each location, and each location has an independent volume control. The page mic is located stage right on the stage managers rack or in the control booth. The page mic will override the independent volume control in each room, but not the master switch.

### Paging / Program Locations\*\*\*

Technical Production	Office Green Room	Butler Control Booth
Large Dressing Room	Dimmer Room	Corridor
Small Dressing Room	Instrument Storage	Costume Shop
Makeup Room	Follow Spot Booth	Black Box Control Room
Costume Shop	Stage Equipment Storage	Black Box Dimmer Room
Scene Shop	Loading Dock	Black Box Amp Room

## Assisted Listening System

House management maintains control of ALD receivers and distributes them upon request.

Type of Equipment	Manufacturer	Model	Notes	Main Hall Inventory
Assisted Listening				
	Listen	LT-800-072	Transmitter	1
	Listen	LT-300-072	Receiver***	35
	Listen	LA-164	Ear Piece***	35
	Listen	LA-166	Neck Loop***	9

\*\*\* Items shared between Butler Hall and Babka Theater

## MISCELLANEOUS

### Pianos

- 1 - Steinway & Sons Concert Grand - Model D - 9'-0"
- 1 - Steinway & Sons Grand – Model S – 5'-1"
- 1 – Yamaha C3 Grand - 6'-1"
- 1 – Yamaha GC1 Grand - 5'-3"
- 1 – Yamaha U1-Silent Upright
- 1 – Yamaha P-125 Keyboard

### Chairs / Music Stands\*\*\*

- 97 - Wenger musician's chairs
- 50 - Manhasset music stands
- 10 – Music Stand lights

### Staging\*\*\*

- 8 – 4'x8' Staging Concepts Stage Decks (Black Finish)
- 60 – 3'-6' Staging Concepts Stage Decks (Black Finish)
- 15 – "Pie" pieces (different sizes)
- 44 – 8" Legs
- 72 – 14" Legs
- 44 – 16" Legs
- 44 – 24" Legs
- 72 – 28" Legs
- (4 legs needed for each deck)

### Skirting for Staging\*\*\*

- 6 – 8" Tall x 8' Long
- 8 – 16" Tall x 8' Long
- 4 – 24" Tall x 8' Long

### Other\*\*\*

- 6 – 30" Wood Backless Stools (Black)
- 5 – 30" Wood Backless Stools (Natural)
- 4 – 30" x 96" Plastic Prop Tables (More available upon request)
- 21 – 2 Channel Cable Ramps 40" x 10"

- 1 – Clearsonic 5 Section Drum Shield 24" x 66"
- 1 – Blizzard Atmosfear Tour HZ Hazer
- 1 – 20" Mirror ball with 3 RPM motor
- 2 – Blizzard Showblind Strobe Lights

## **BACKSTAGE**

### **Dressing Rooms\*\*\***

2 dressing rooms with counters, mirrors, toilets, sinks and showers

1 Makeup room located between the dressing rooms equipped with counters, mirrors, outlets, sinks, and mirror lights

### **Laundry\*\*\***

1 – Jiffy Steamer J-4000

2 – Iron

2 – Ironing Board

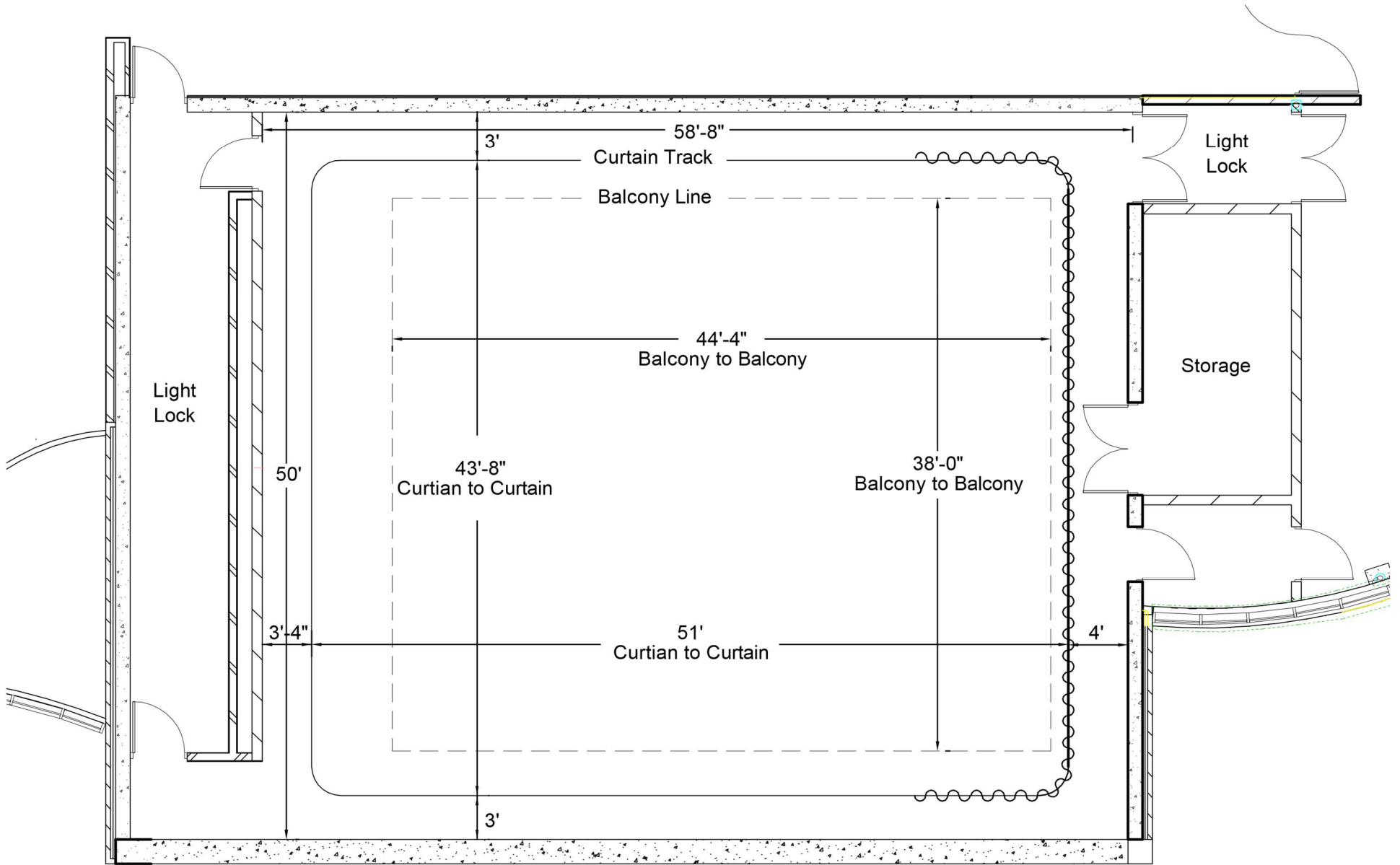
Washer and Dryer needs can be accommodated on campus with advance notice

### **Green Room\*\*\***

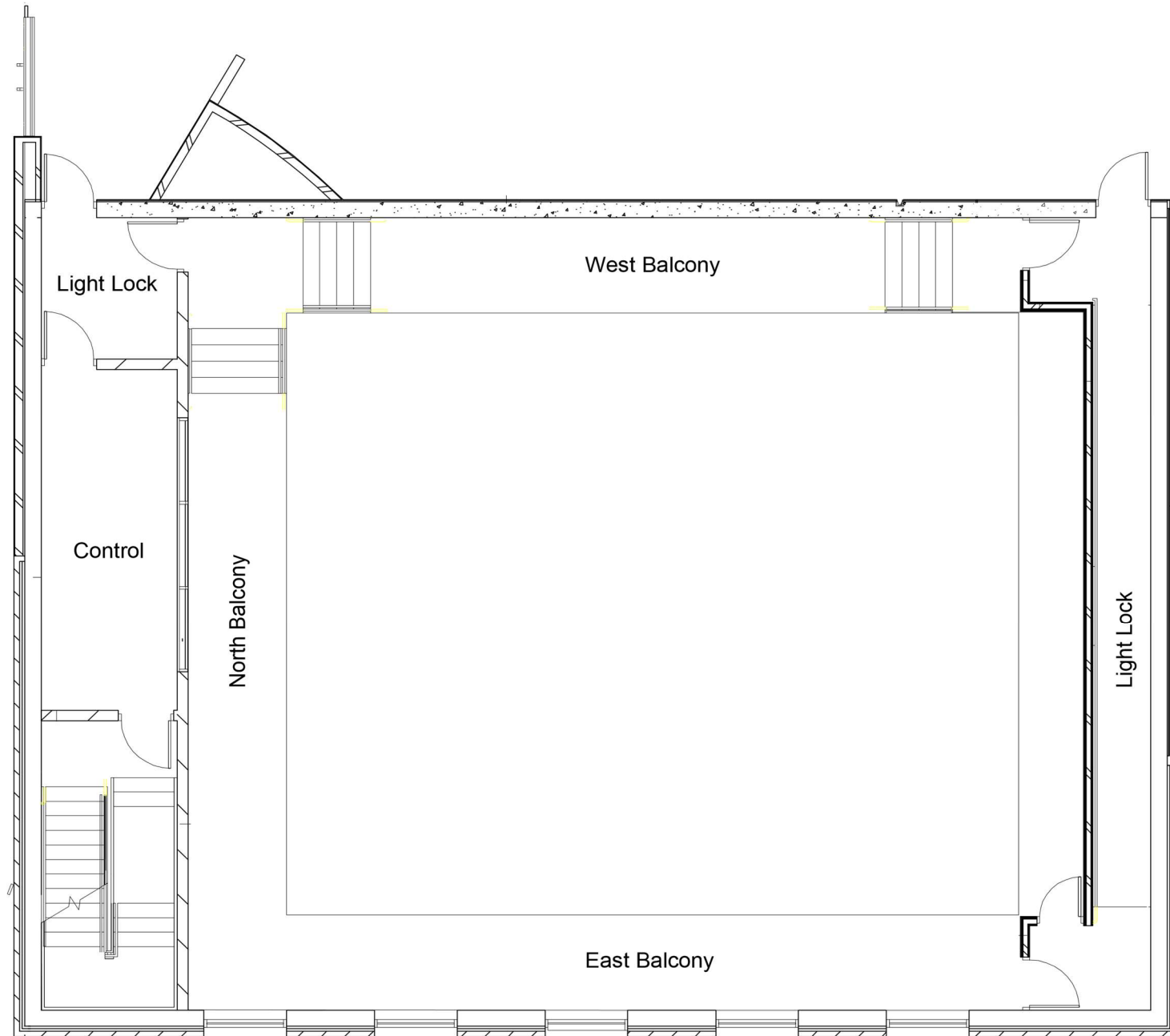
The Green Room is an open lounge located between the Babka Theatre and Butler Hall backstage.

\*\*\* Items shared between Butler Hall and Babka Theater

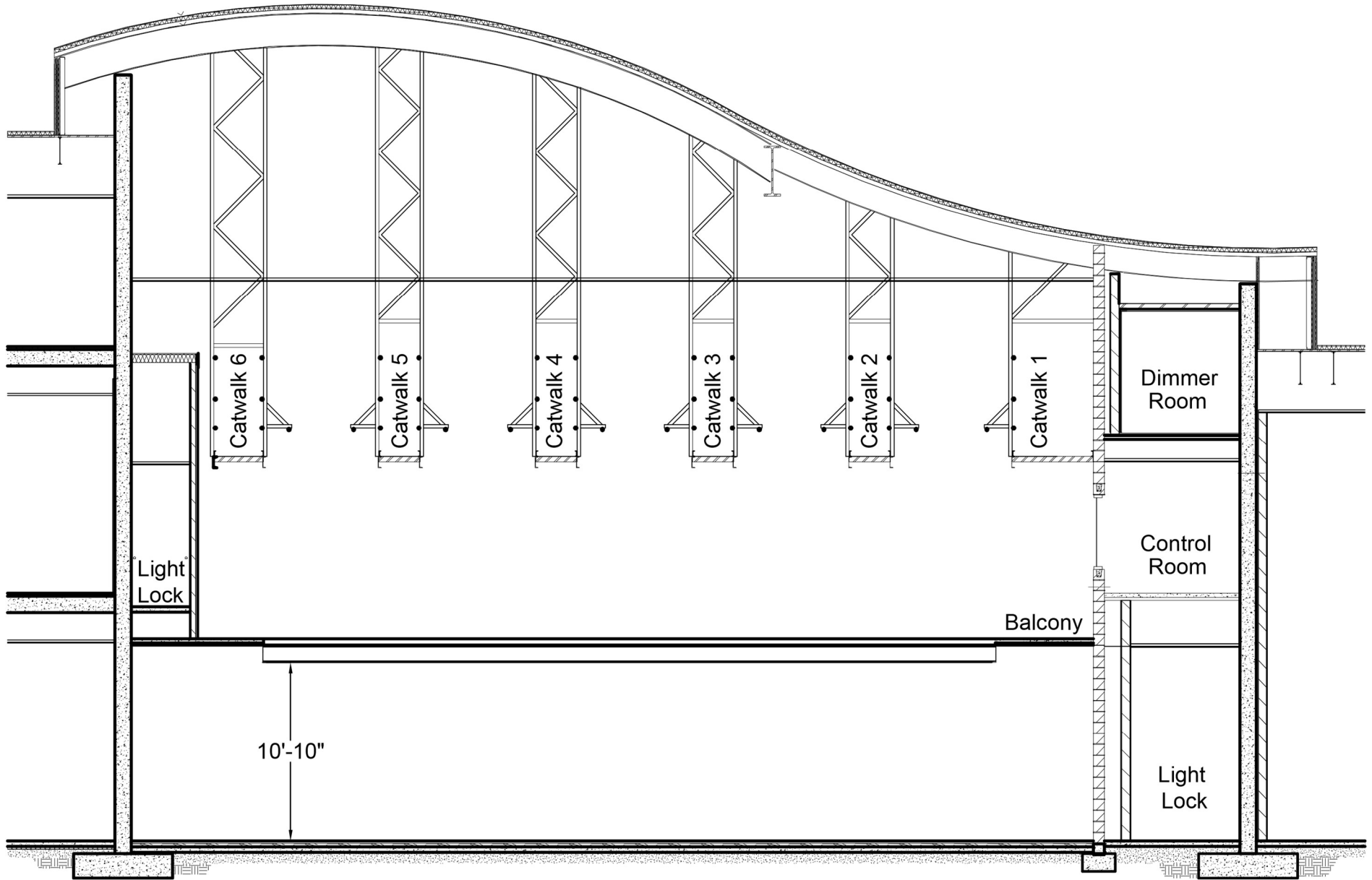
# MAIN FLOOR



# BALCONY LEVEL

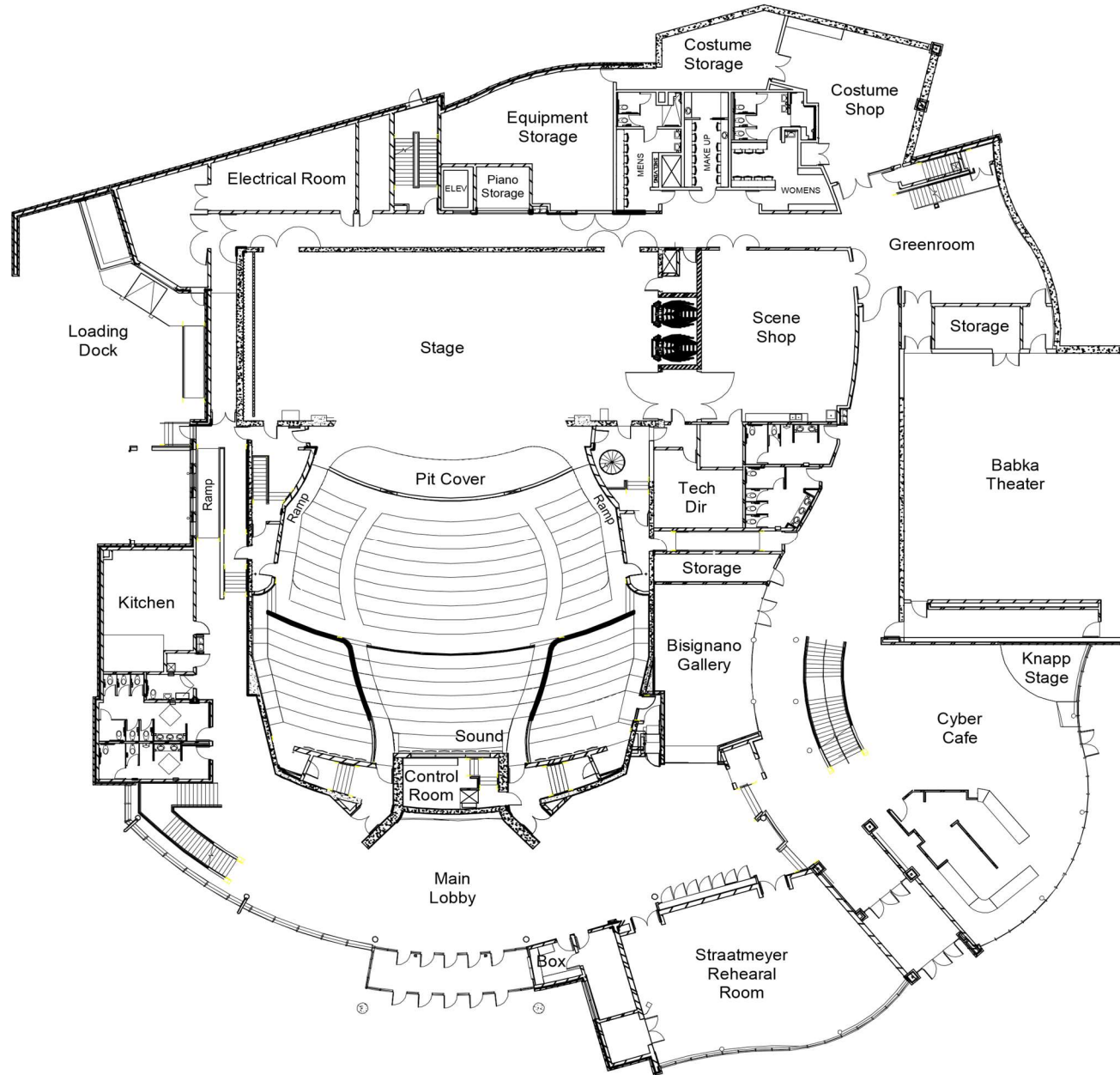


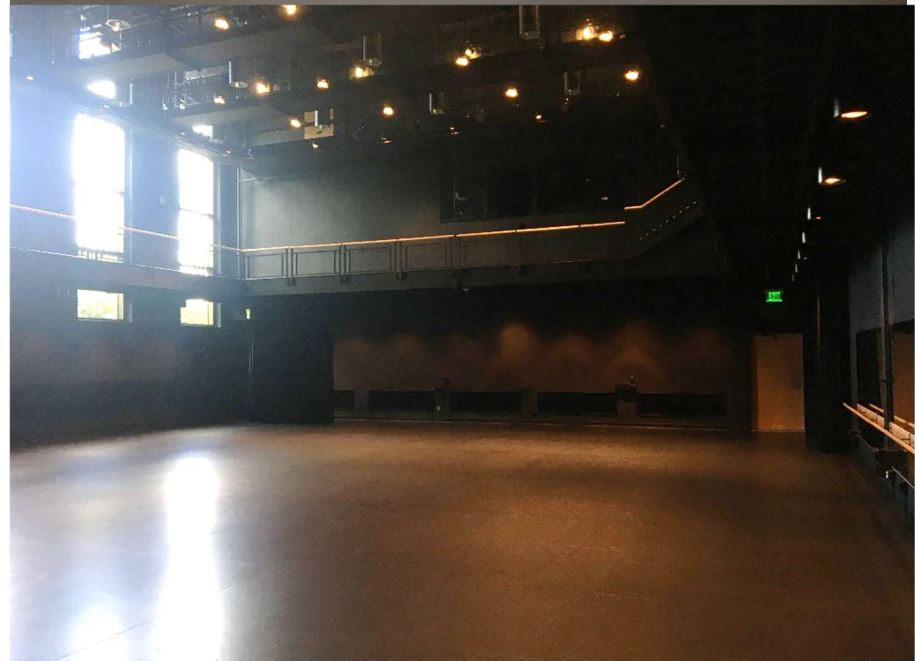
# CROSS SECTION





# FIRST FLOOR LAYOUT





## Hotels (in alphabetical order, no recommendation implied)

Best Western Plus Dubuque Hotel & Conference Center 3100 Dodge St, Dubuque, IA	(563) 557-8000
Country Inn & Suites By Carlson Dubuque, IA 1315 Associates Dr, Dubuque, IA	(563) 583-2500
Days Inn Dubuque 1111 Dodge St, Dubuque, IA	(563) 583-3297
Grand Harbor Resort & Waterpark 350 Bell St, Dubuque, IA	(563) 690-4000
Hampton Inn Dubuque 3434 Dodge St, Dubuque, IA	(563) 690-2005
Hilton Garden Inn Dubuque Downtown 1801 Greyhound Park Rd, Dubuque, IA	(563) 585-5200
Holiday Inn Dubuque 450 Main Street Dubuque, IA 52001	(563) 556-2000
Hotel Julien Dubuque 200 Main St, Dubuque, IA	(563) 556-4200
Redstone Inn & Suites 504 Bluff St, Dubuque, IA	(563) 582-1894
Super 8 Dubuque/Galena Area 2730 Dodge St, Dubuque, IA	(563) 582-8898

## Medical (in alphabetical order, no recommendation implied)

<a href="#">Finley Hospital</a> - .4 Miles 350 N Grandview Ave, Dubuque, IA	(563) 582-1881
<a href="#">Mercy Hospital</a> - 1.3 Miles 250 Mercy Dr, Dubuque, IA	(563) 589-8000

## **Taxi** (in alphabetical order, no recommendation implied)

#1 Green Cab	(563) 495-4444
A1 Taxi & Delivery Premier Services	(563) 582-1818
A Classy Taxi	(563) 495-7222
C M Cab Co	(563) 556-1303
E & R Taxi	(563) 564-9938
E-Z Taxi Service of Dubuque	(563) 582-3999
Starlight Mini Bus & Limousine	(563) 552-2028
Starlight Cab Co	(563) 556-6666

## **Laundry/Drycleaners**

Courtesy Cleaners 535 Hill St, Dubuque, IA	(563) 583-5332
Courtesy Cleaners 3398 Kennedy Cir, Dubuque, IA	(563) 583-3999
Premier Linen & Uniform 461 W 9th St, Dubuque, IA	(563) 583-9153